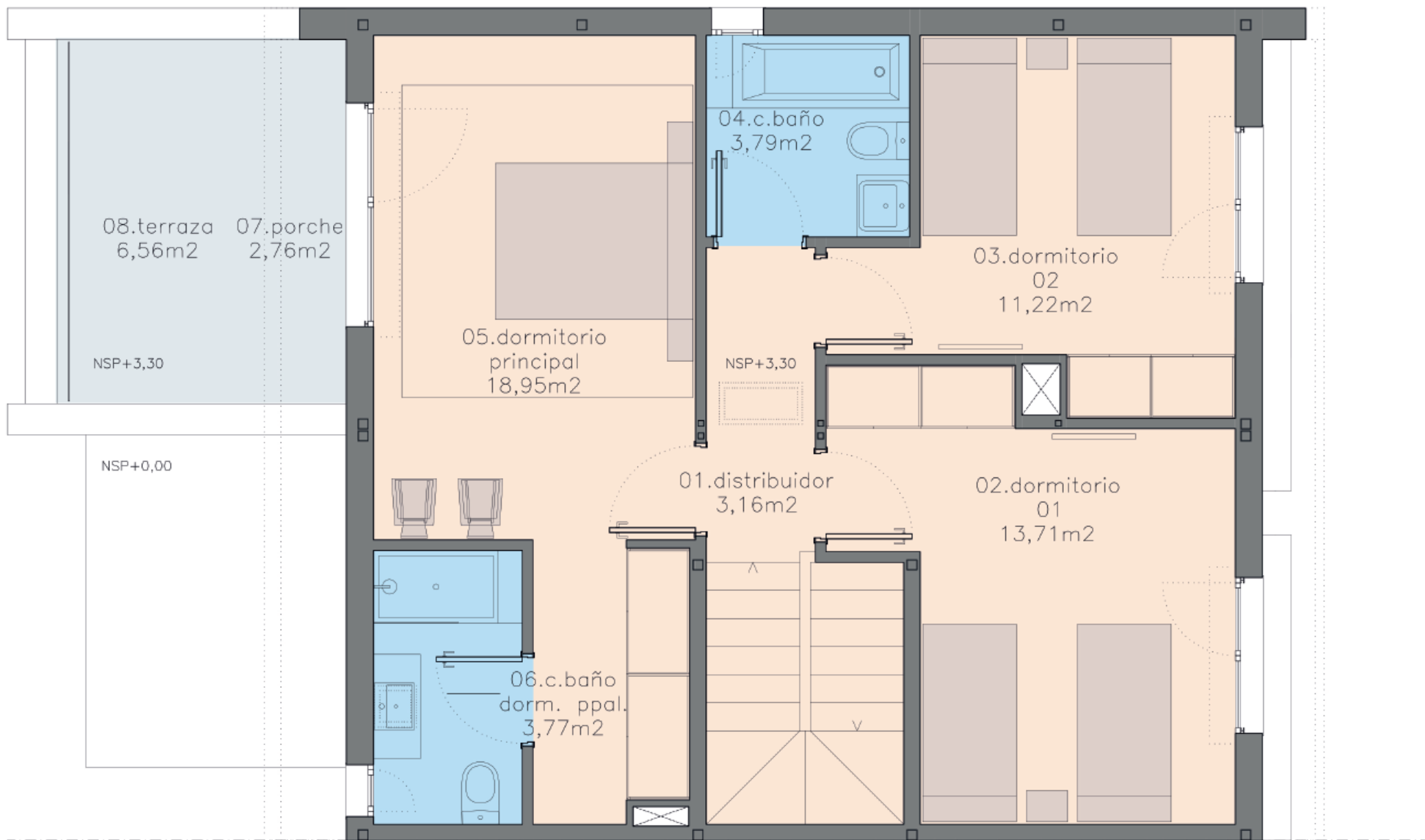




PLANTA BAJA



PLANTA ALTA





The image is a site plan map for a residential development. The main area is colored orange and divided into several large lots by a network of white roads. A central road features a roundabout. To the north, a narrow strip of land is divided into smaller lots, with one lot highlighted in blue and marked with a black dot. A white rectangular box in the upper center contains the project name. The background is light green, and the bottom edge shows a light blue area representing water. A north arrow is located in the bottom right corner.

CM Casas
de las
Marismas

OceaN
HOMES